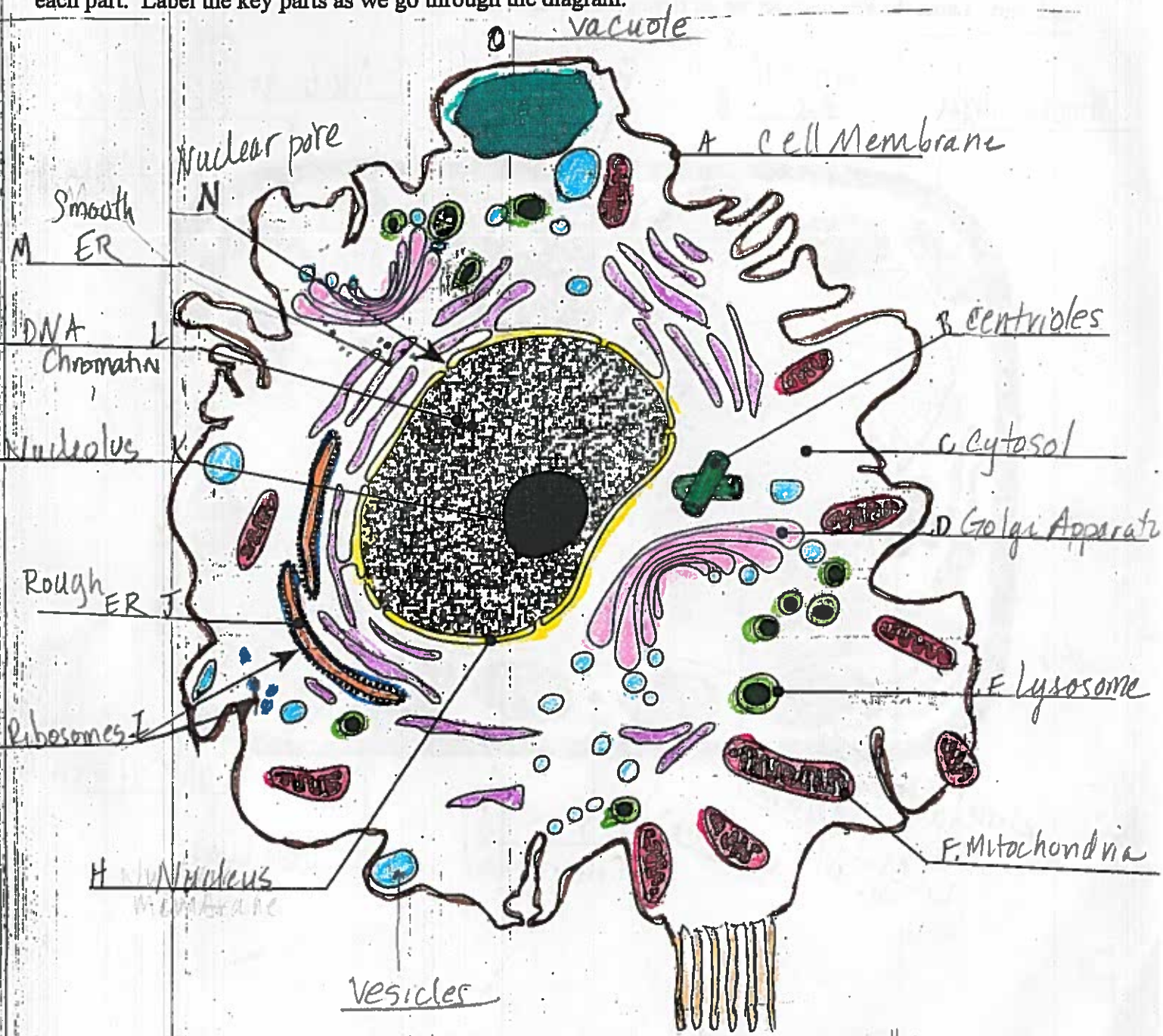


# ANIMAL CELL

Directions: Using colored pencils color the plant cell and its organelles different colors in order to distinguish each part. Label the key parts as we go through the diagram.



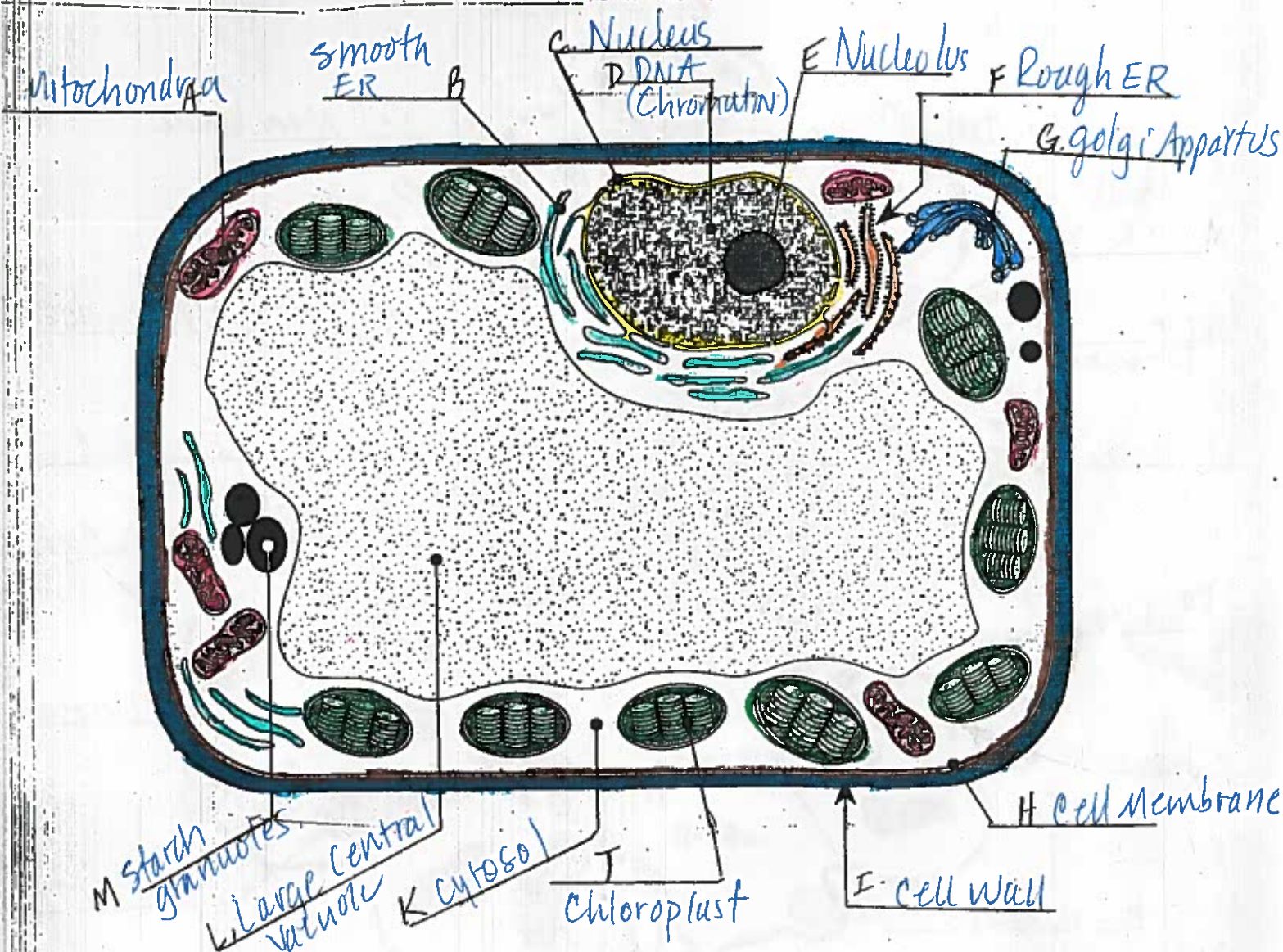
Vacuole - a permanent structure that holds enzyme, water, and is a site for chemical reactions

Vesicle - storage container for shipping in or out of cell. They are Not permanent structures. (enzymes, food, waste)

# PLANT CELL

Name \_\_\_\_\_ Date \_\_\_\_\_ Period \_\_\_\_\_

Directions: Using colored pencils color the plant cell and its organelles different colors in order to distinguish each part. Label the key parts as we go through the diagram.



1. Flagella

Prokaryotic = Bacteria

3. DNA-nucleoid  
circular

4. cell membrane

5. Ribosomes

8 cytosol

6. Cell wall

7. Capsule

2. Pili  
(Pilus)

